

WASCO COUNTY LABORFORCE UPDATE

Northern Wasco County PUD

September 2nd, 2025

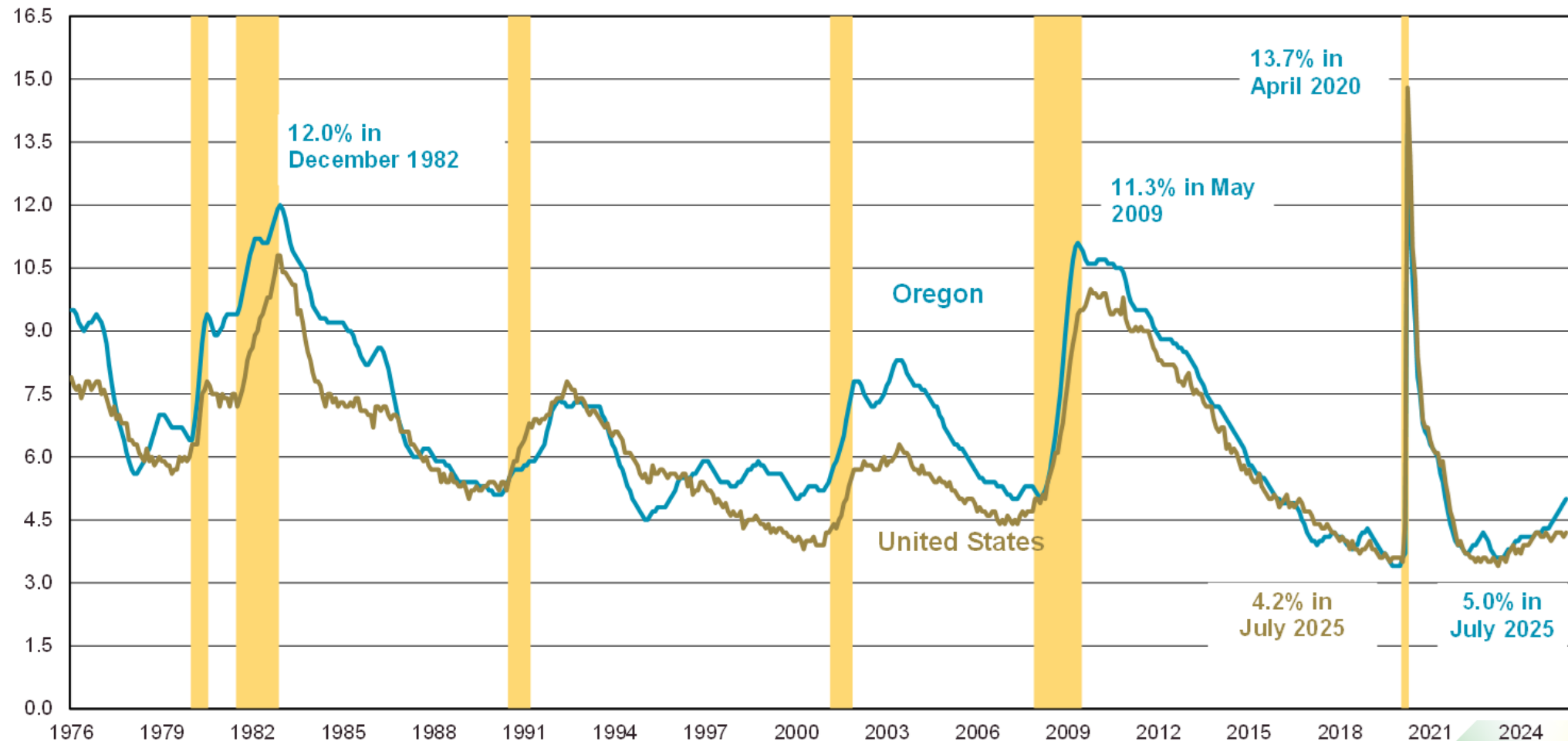
THE BACKDROP: STATE LEVEL DATA

Local Area Unemployment Statistics (LAUS)
Current Employment Statistics (CES)
Quarterly Census of Employment and Wages (QCEW)
Help Wanted OnLine Ads (HWOL)*
Quarterly Forecast from the Oregon Office of Economic
Analysis (EOA)

*The Conference Board

OREGON'S UNEMPLOYMENT RATE WAS 5.0% IN JULY

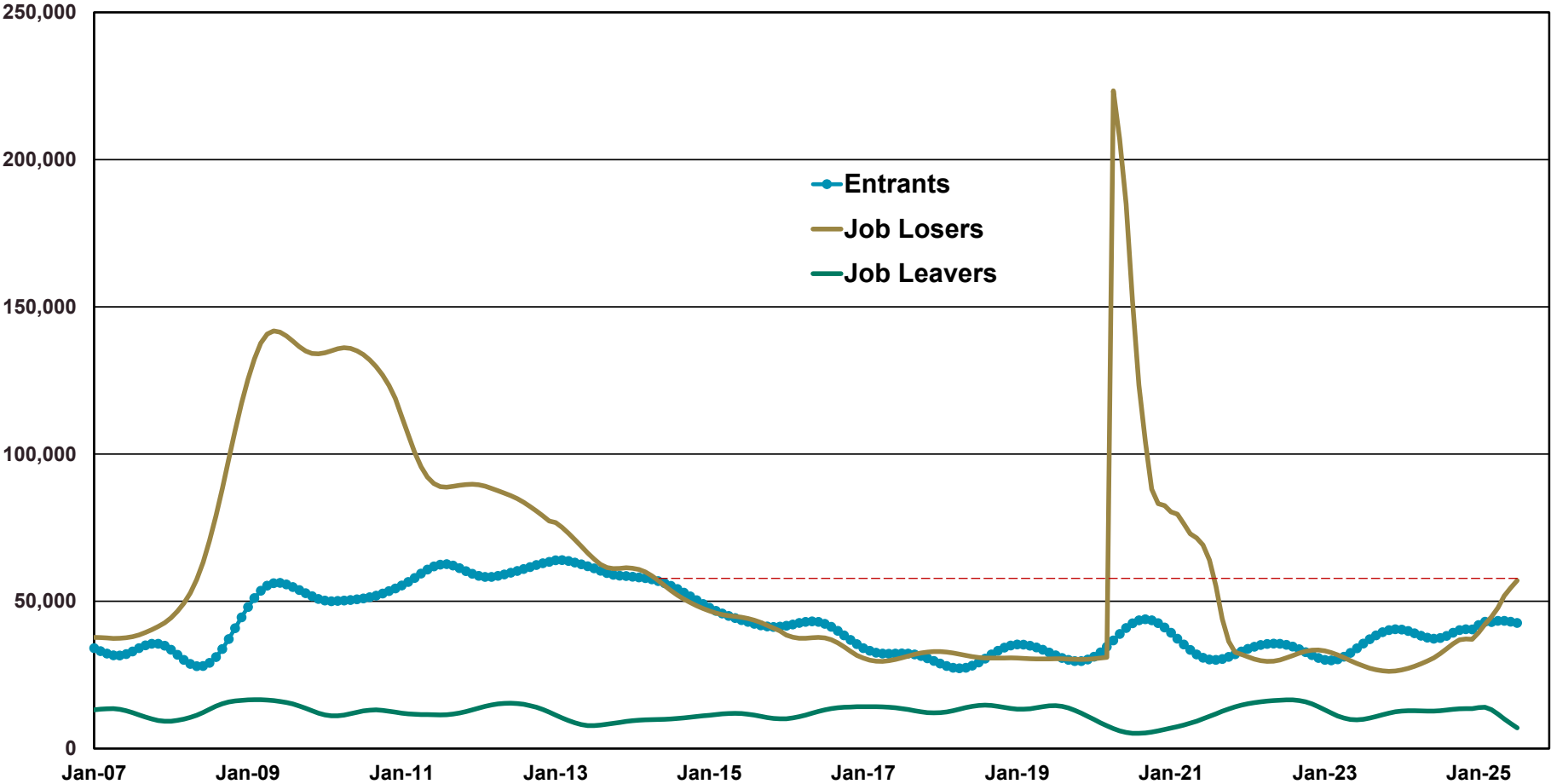
Oregon's Unemployment Rate Was 5.0% in July 2025 Unemployed % of Labor Force (Bars Represent Recessions)



Source: Oregon Employment Department and U.S. Bureau of Labor Statistics

WHY ARE OREGONIANS UNEMPLOYED?

Oregon Unemployment by Reason [Trend]



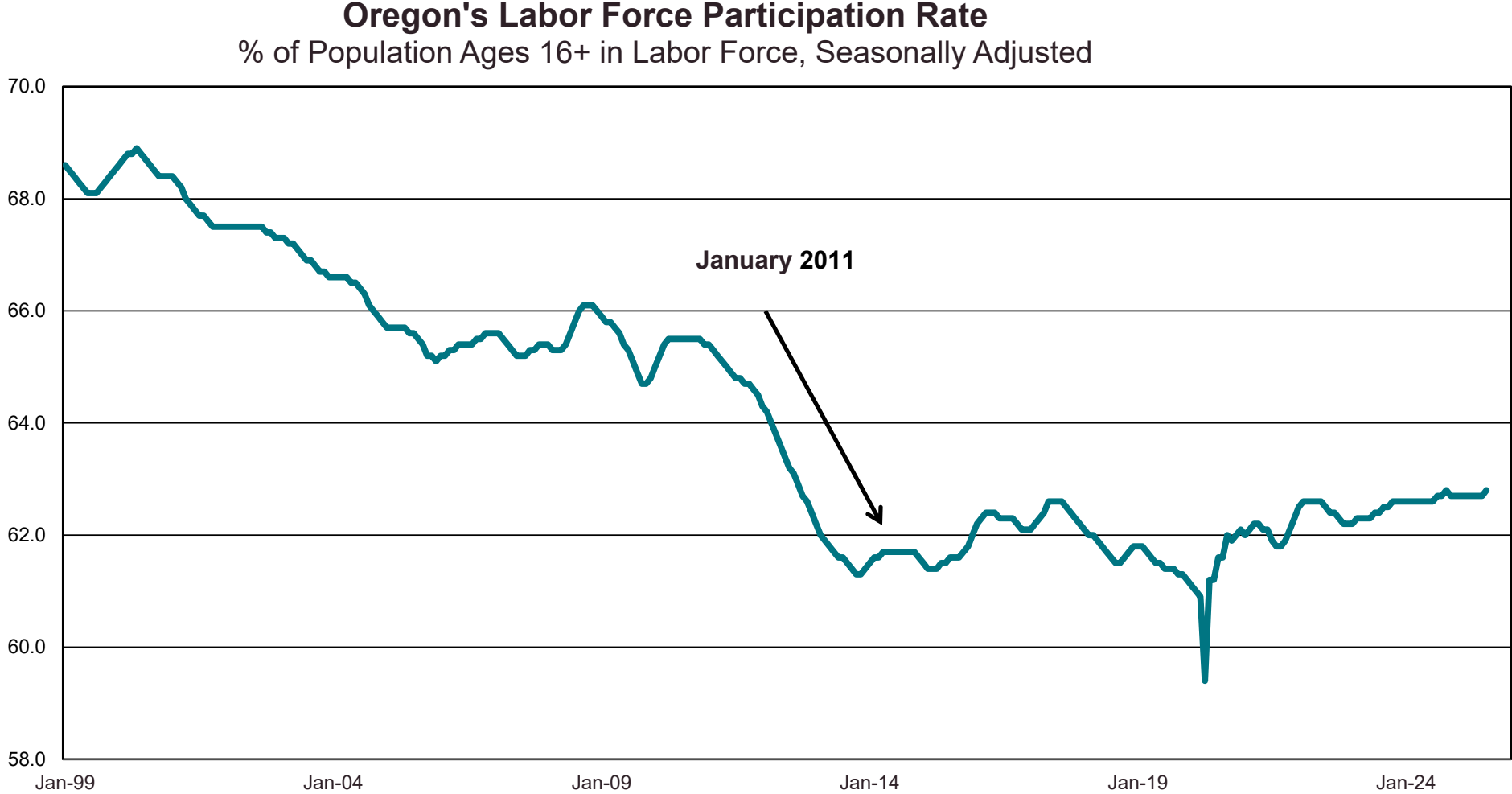
New or returning to the workforce
42,700 (40%)

Lost job
57,100 (53%)

Left job voluntarily
7,000 (7%)

Source: Oregon Employment Department, Current Population Survey

OREGON'S LABOR FORCE PARTICIPATION RATE WAS 62.8% IN JULY



Source: Oregon Employment Department, Local Area Unemployment Statistics

EMPLOYERS DROPPED 2,700 NONFARM PAYROLLS JOBS IN JULY

Oregon
Total nonfarm employment

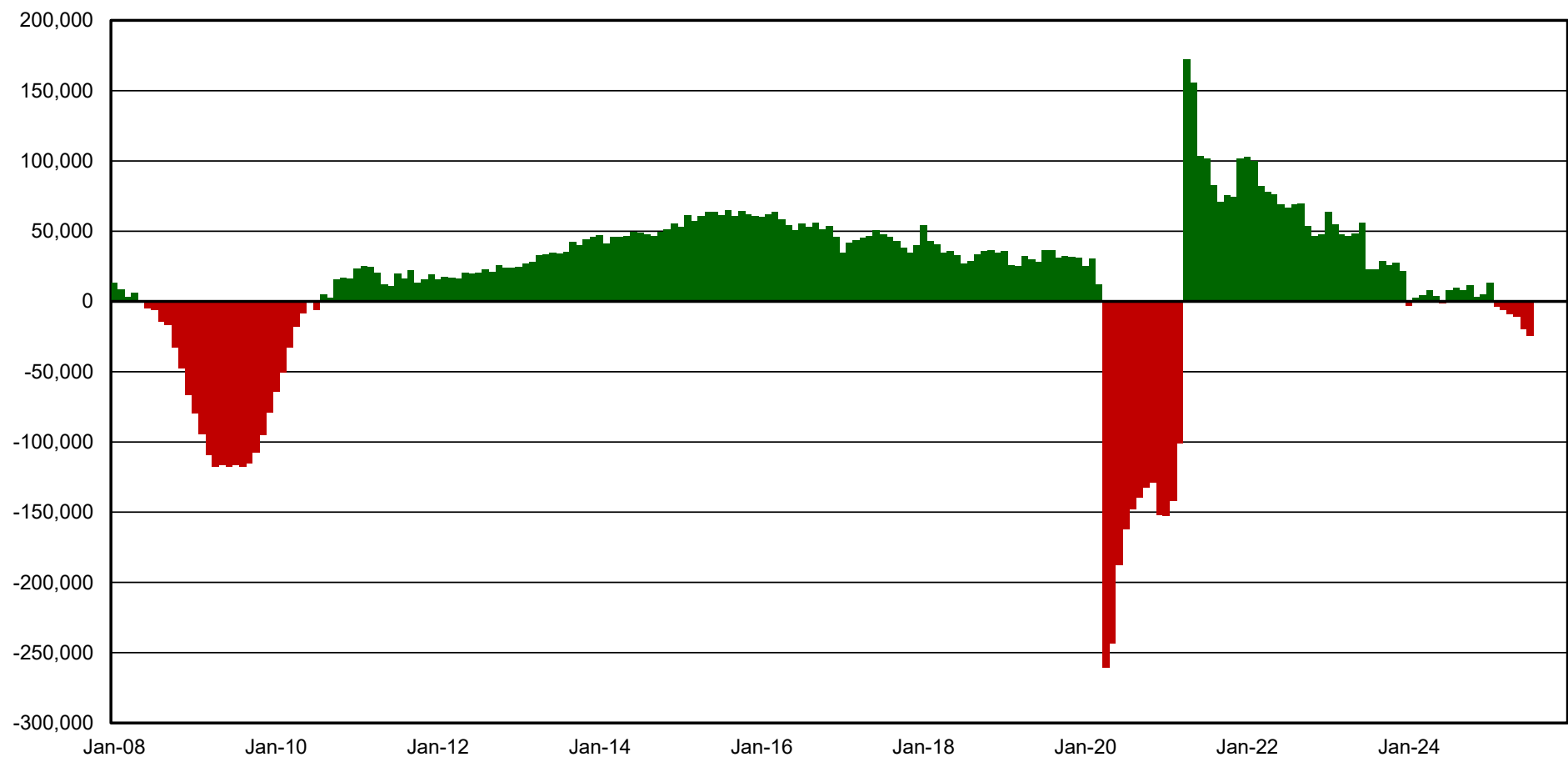
(seasonally adjusted)
Official Oregon Series



Source: Oregon Employment Department QualityInfo.org

EMPLOYMENT DROPPED 24,600 (-1.2%) JOBS FROM JULY 2024 TO JULY 2025

Oregon's Year-Over-Year Job Growth/Decline
Seasonally Adjusted

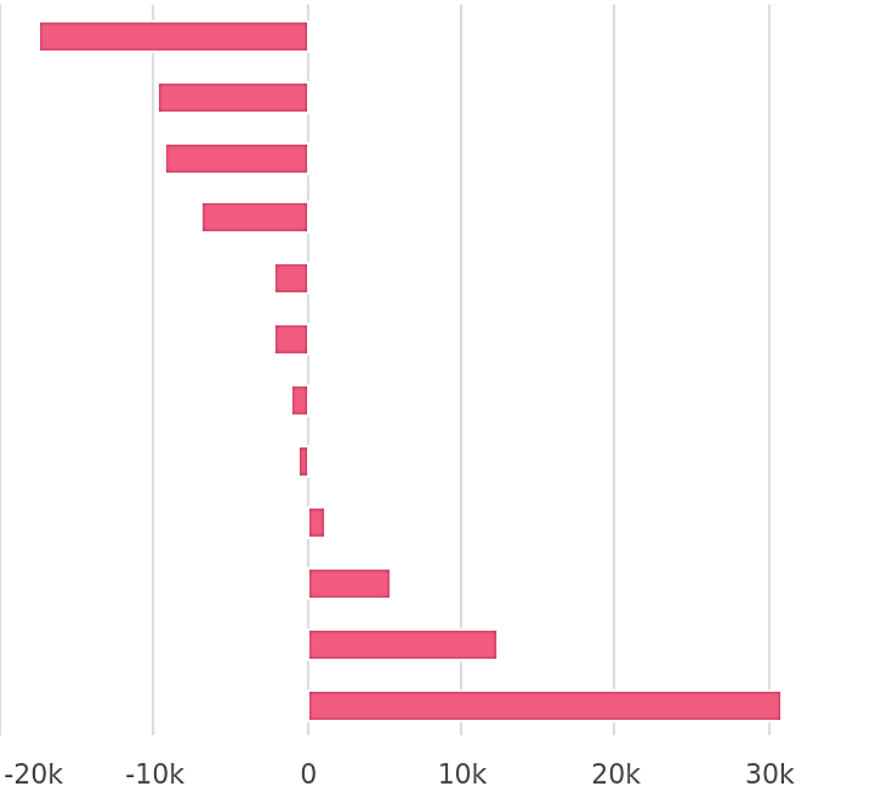


Source: Oregon Employment Department, Current Employment Statistics

FOUR INDUSTRIES ARE STILL ABOVE PRE-PANDEMIC HIGHS, WHILE EIGHT ARE BELOW

Oregon Employment Change Since Peak

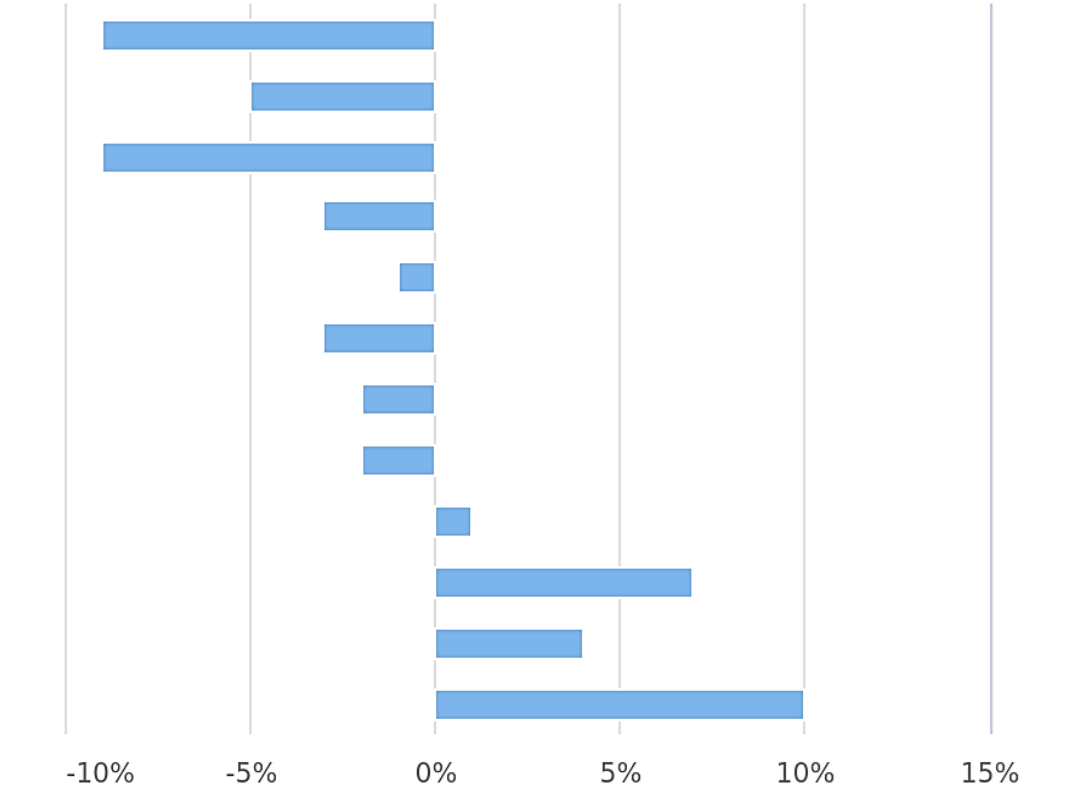
(February 2020 to July 2025)



Oregon Employment Department, Current Employment Statistics

Oregon Employment Percent Change Since Peak

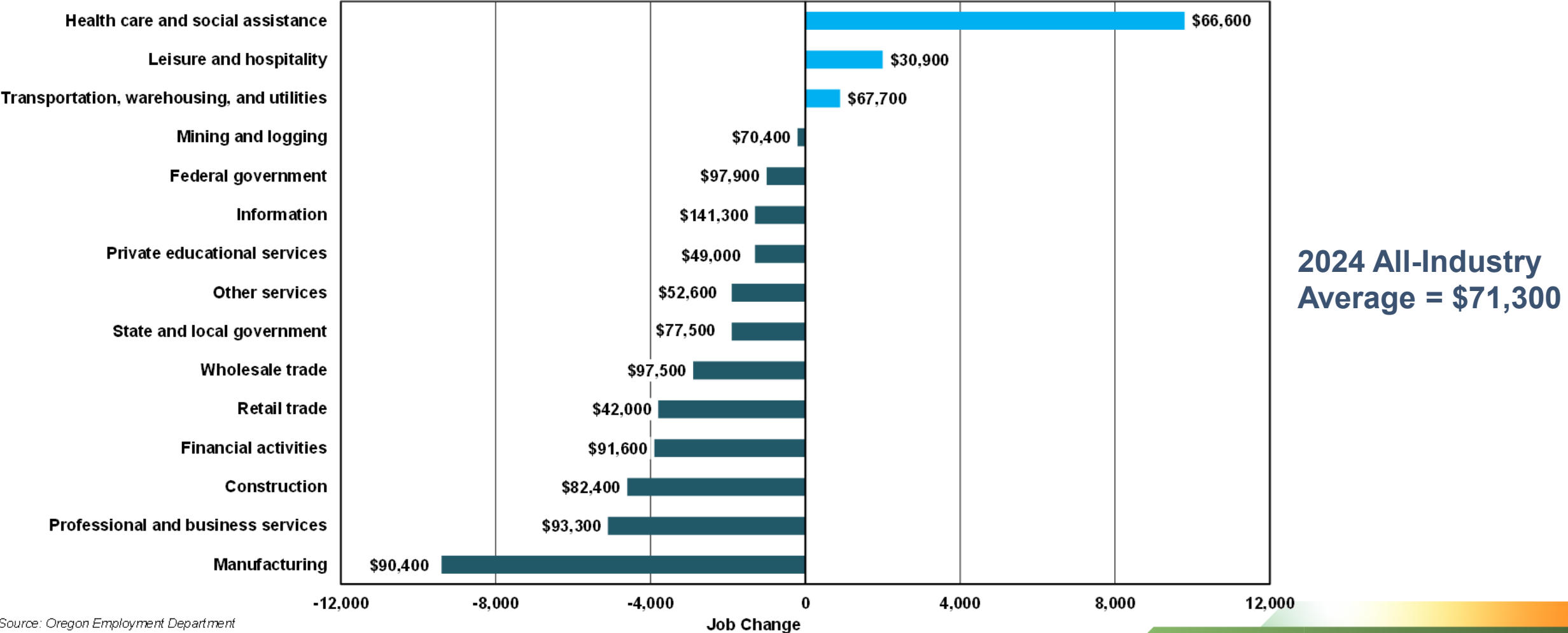
(February 2020 to July 2025)



Oregon Employment Department, Current Employment Statistics

OREGON'S JOB GAINS HAVE BEEN CONCENTRATED IN HEALTH CARE AND SOCIAL ASSISTANCE

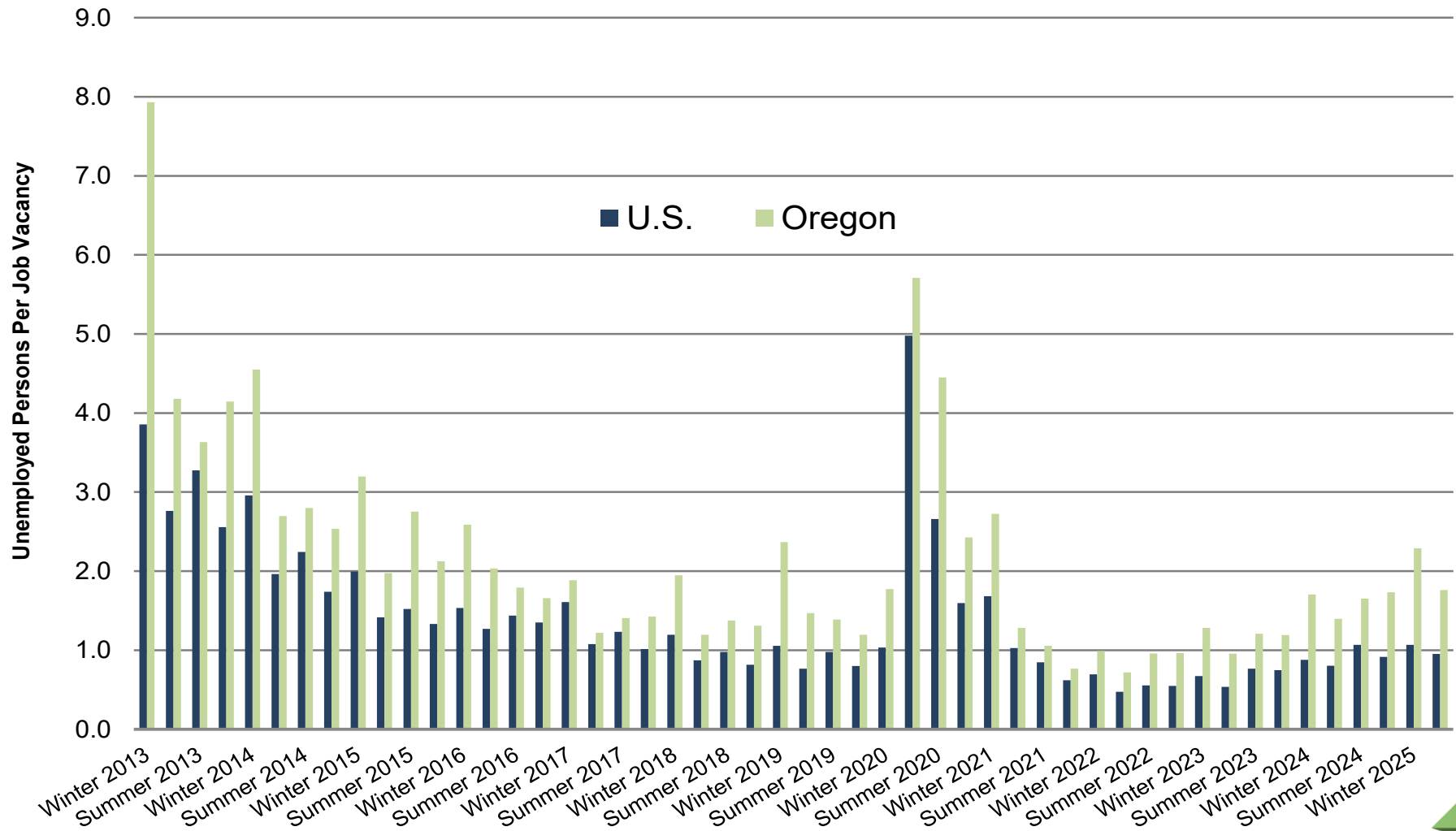
Oregon Job Change and Average Pay by Industry
July 2024 - July 2025 Job Change, 2024 Average Pay



Source: Oregon Employment Department

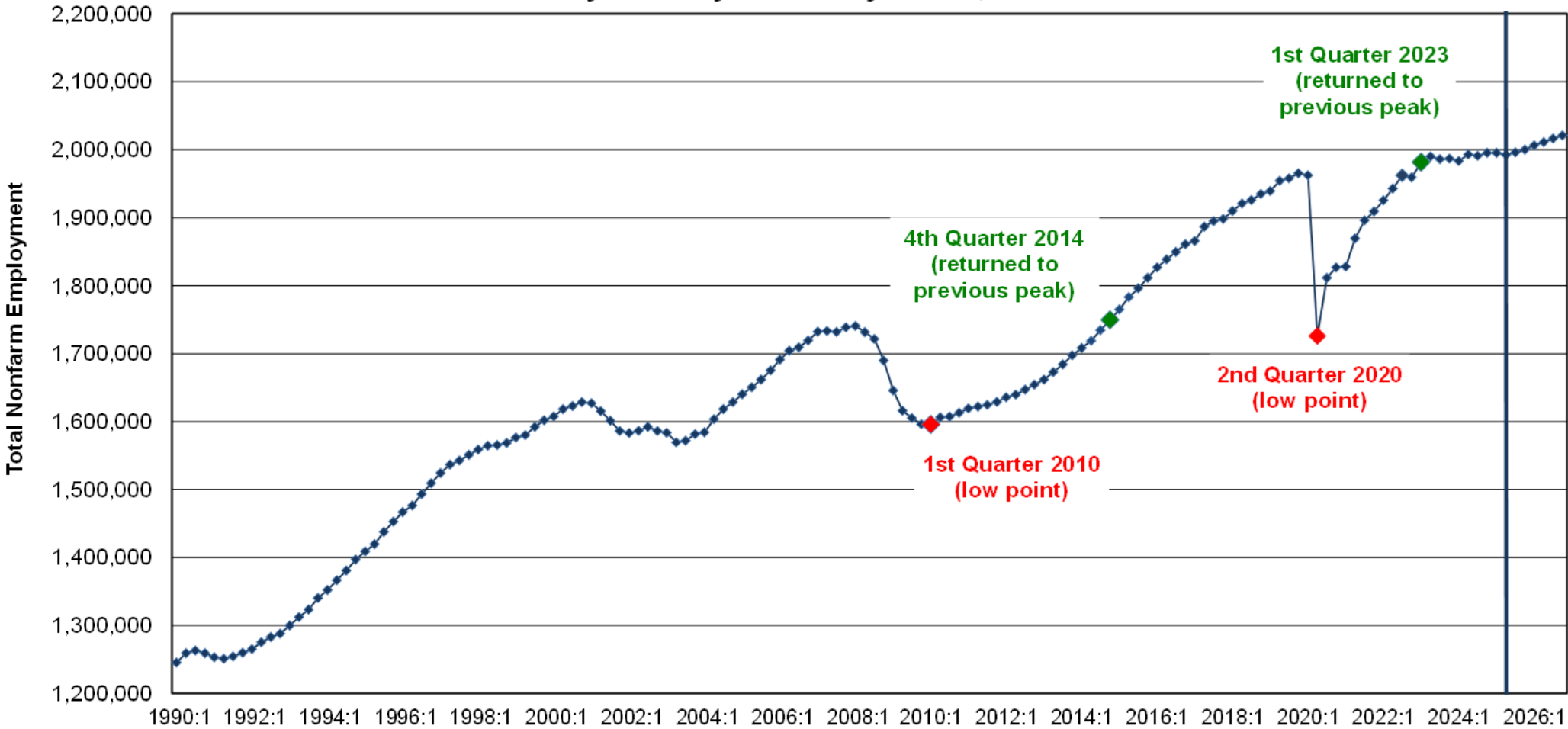
OREGON HAS ROUGHLY TWO UNEMPLOYED PEOPLE PER JOB VACANCY

U.S. and Oregon Unemployed to Job Vacancy Ratios Rising Slowly after Record Lows
(Job Openings with Private Employers, 2013-2025)



- The U.S. ratio was around 1.0 in January 2025. It reached 5.0 in April 2020 after several years around 1-to-1. It has remained at or below 1.0 for 16 quarters.
- Oregon had 1.8 unemployed persons per job vacancy in spring 2025, part of a steady rise since the post-pandemic recession expansion period in 2021 and 2022.

Oregon Nonfarm Payroll Employment
Quarterly History and Projection, 1990-2026



Source: Office of Economic Analysis, Department of Administrative Services, May 2025

REGIONAL DATA: PAST, PRESENT, AND FUTURE

Local Area Unemployment Statistics (LAUS)
Current Employment Statistics (CES)
Quarterly Census of Employment and Wages (QCEW)
Help Wanted OnLine Ads (HWOL)*
*The Conference Board
Industry Employment Projections, OED

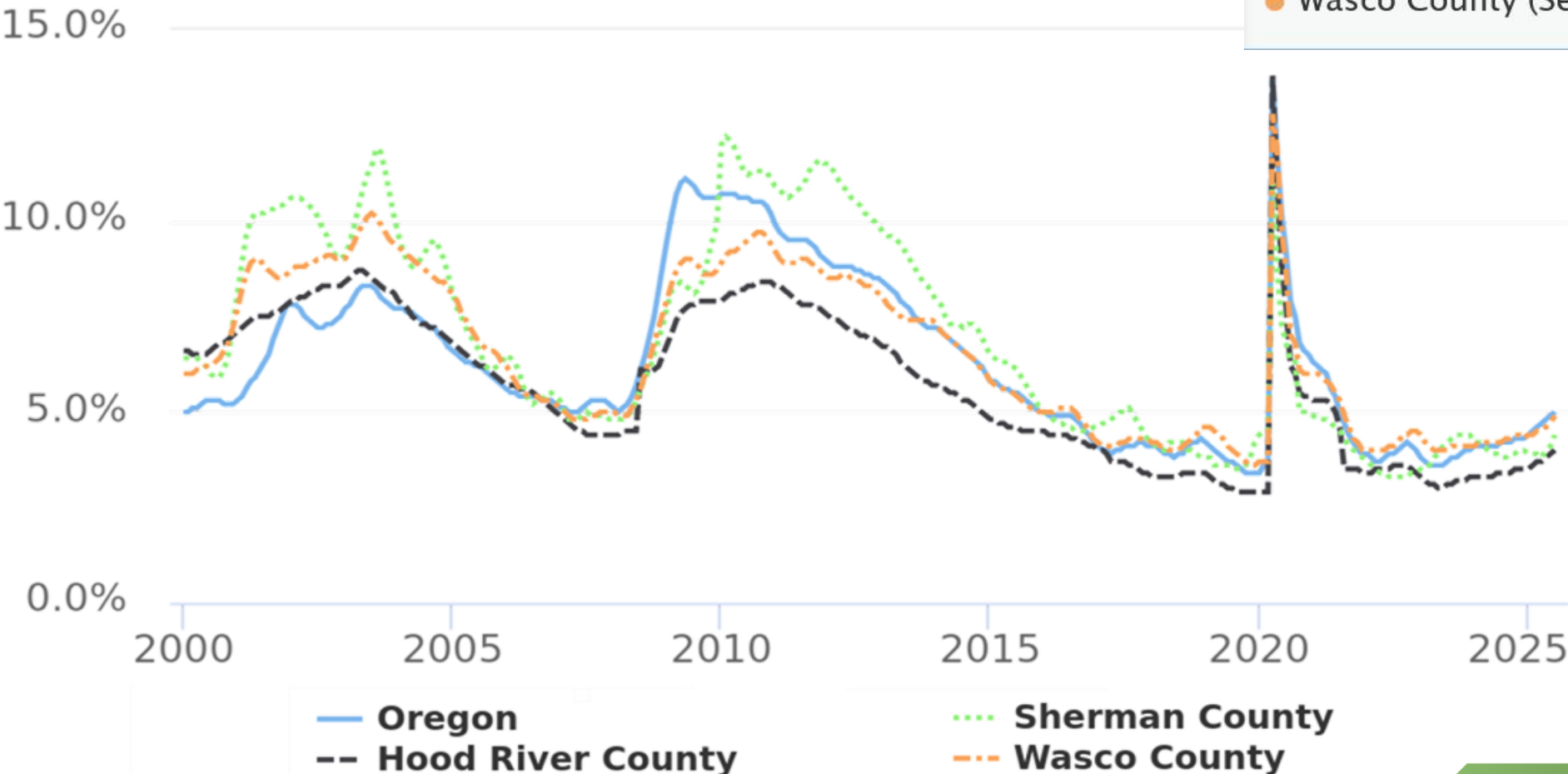
UNEMPLOYMENT RATES HAVE BEEN ON THE RISE

Unemployment Rate

July 2025

- Oregon (Seasonally Adjusted): 5.0%
- Hood River County (Seasonally Adjusted): 4.0%
- Sherman County (Seasonally Adjusted): 4.4%
- Wasco County (Seasonally Adjusted): 4.9%

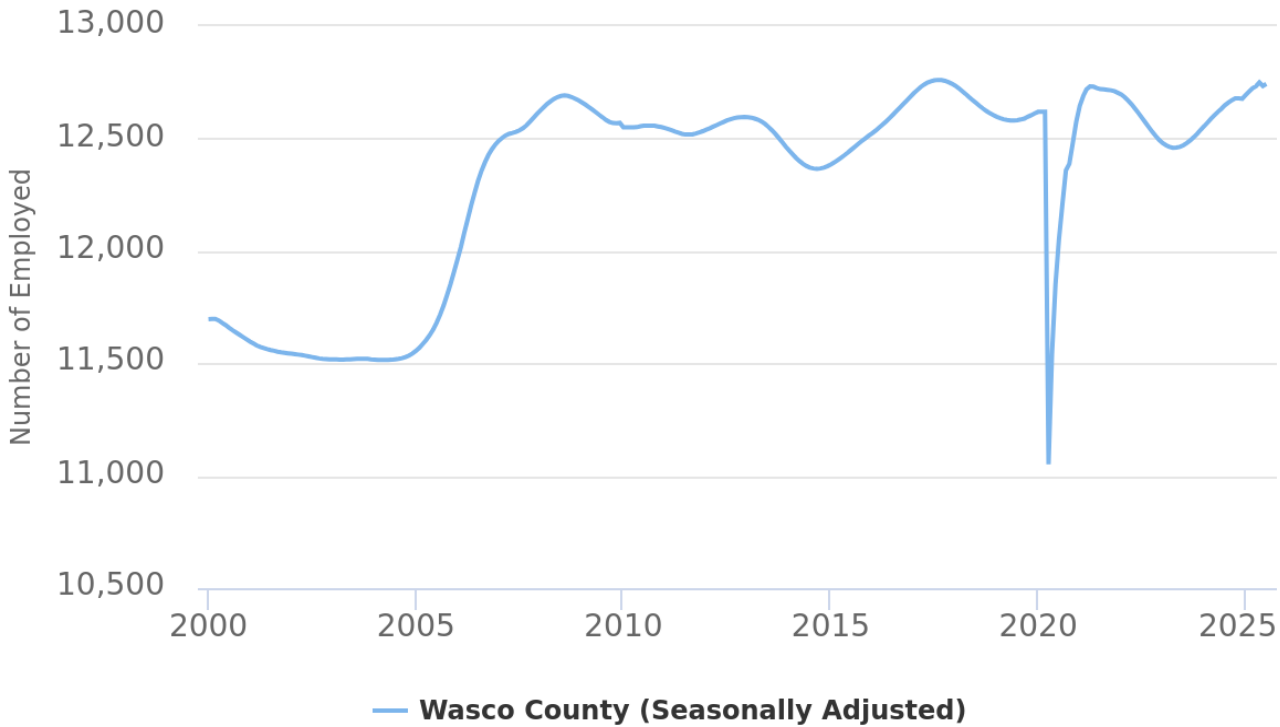
Unemployment Rate



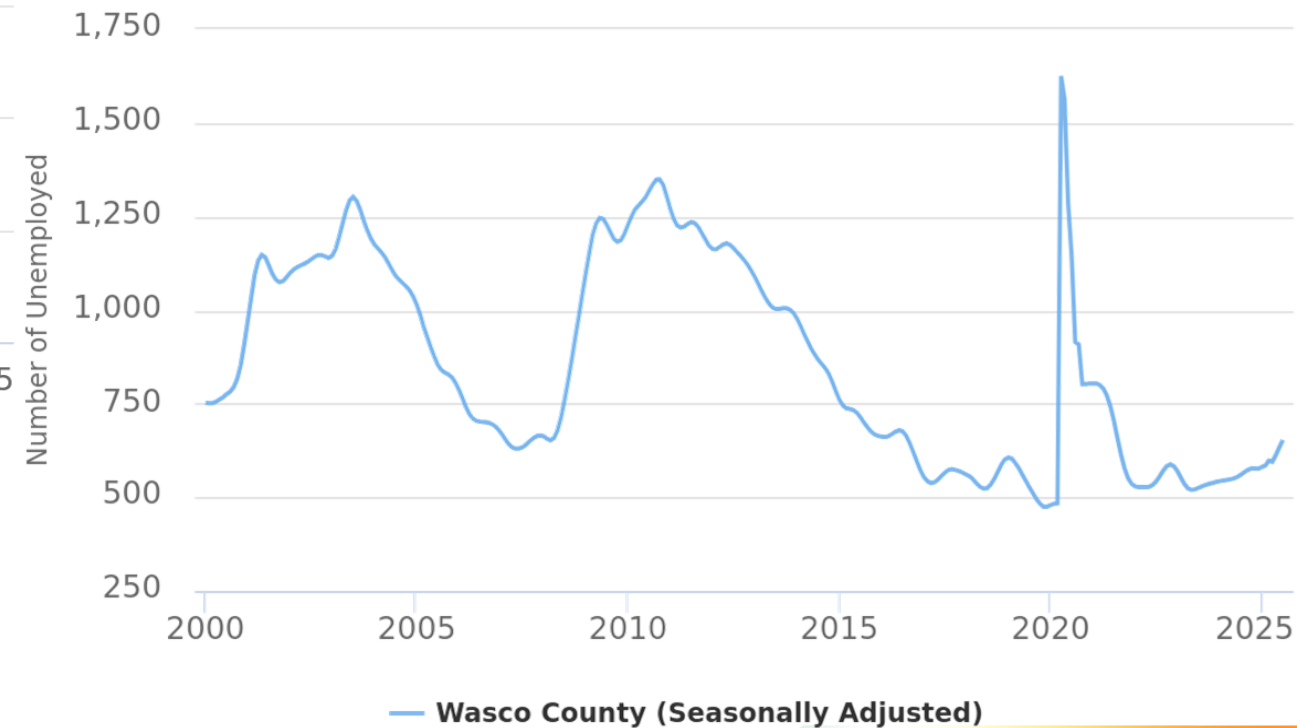
THE # OF UNEMPLOYED RESIDENTS IS RISING WHILE THOSE EMPLOYED IS NEAR HISTORIC HIGHS

Wasco County,
2000-2025
(Seasonally Adjusted)

Number of Employed



Number of Unemployed

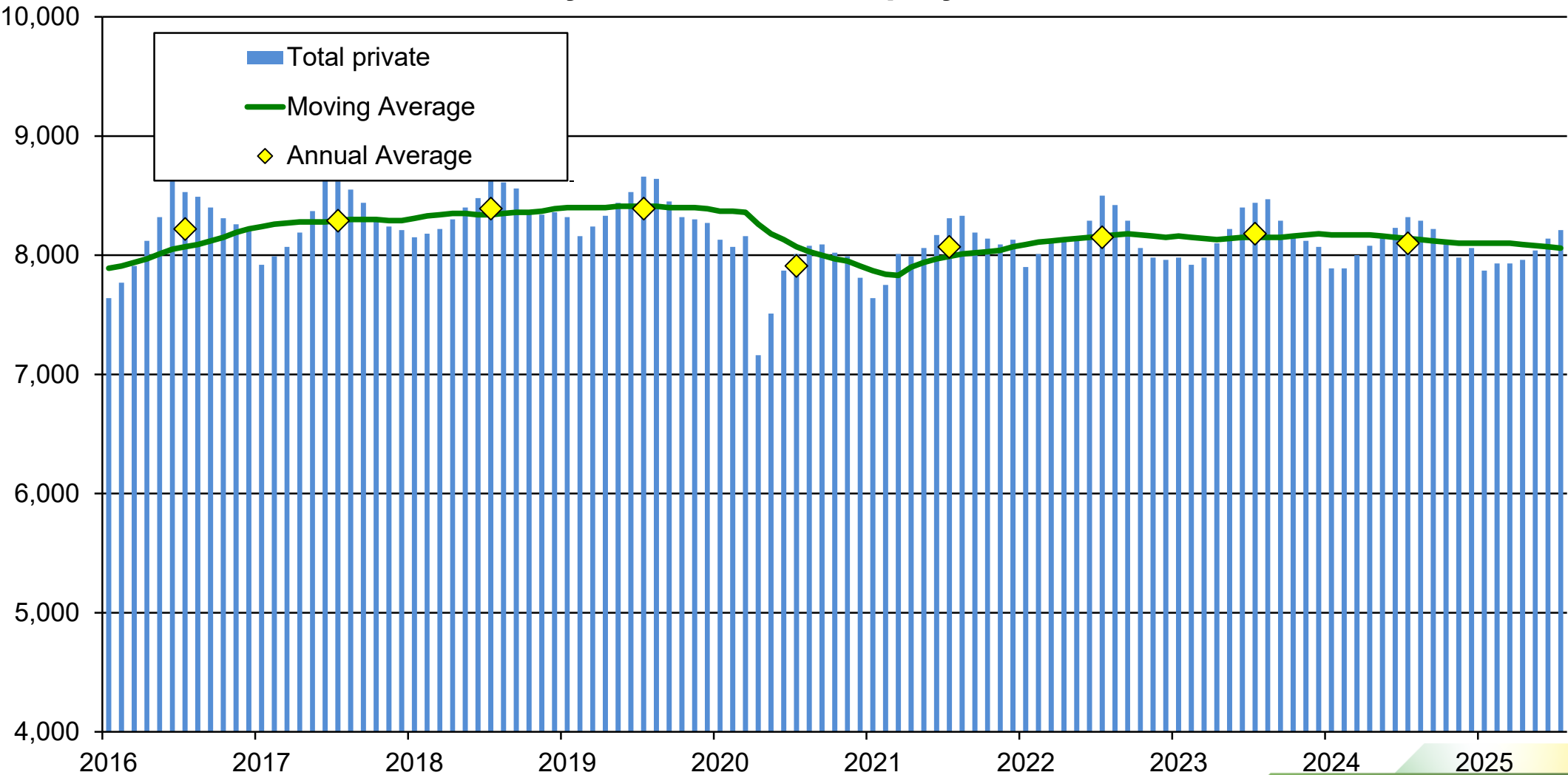


WASCO COUNTY: CURRENT OUTLOOK – JULY 2025 BY INDUSTRY

Wasco County				Jobs to Reach Full Recovery		Initial Job Loss	
Industry	Jul-19	Jul-20	Jul-25	Current Loss or Gain		July 2019 - July 2020	
Total nonfarm employment	10,500	9,720	10,390	(110)	-1.0%	(780)	-7.4%
Total private	8,660	8,010	8,210	(450)	-5.2%	(650)	-7.5%
Mining, logging, and construction	480	410	480	0	0.0%	(70)	-14.6%
Mining and logging	80	60	50	(30)	-37.5%	(20)	-25.0%
Construction	400	350	430	30	7.5%	(50)	-12.5%
Manufacturing	610	570	490	(120)	-19.7%	(40)	-6.6%
Trade, transportation, and utilities	2,120	2,090	1,970	(150)	-7.1%	(30)	-1.4%
Wholesale trade	160	160	200	40	25.0%	0	0.0%
Retail trade	1,720	1,670	1,520	(200)	-11.6%	(50)	-2.9%
Transportation, warehousing, and utilities	240	260	250	10	4.2%	20	8.3%
Information	170	250	250	80	47.1%	80	47.1%
Financial activities	350	330	270	(80)	-22.9%	(20)	-5.7%
Professional and business services	570	480	580	10	1.8%	(90)	-15.8%
Private education and health services	2,440	2,320	2,240	(200)	-8.2%	(120)	-4.9%
Ambulatory health care services	440	440	510	70	15.9%	0	0.0%
Nursing and residential care facilities	560	580	480	(80)	-14.3%	20	3.6%
Leisure and hospitality	1,500	1,230	1,580	80	5.3%	(270)	-18.0%
Accommodation and food services	1,290	1,130	1,370	80	6.2%	(160)	-12.4%
Other services	420	330	350	(70)	-16.7%	(90)	-21.4%
Government	1,840	1,710	2,180	340	18.5%	(130)	-7.1%

WASCO COUNTY: CURRENT OUTLOOK – TOTAL PRIVATE NONFARM EMPLOYMENT

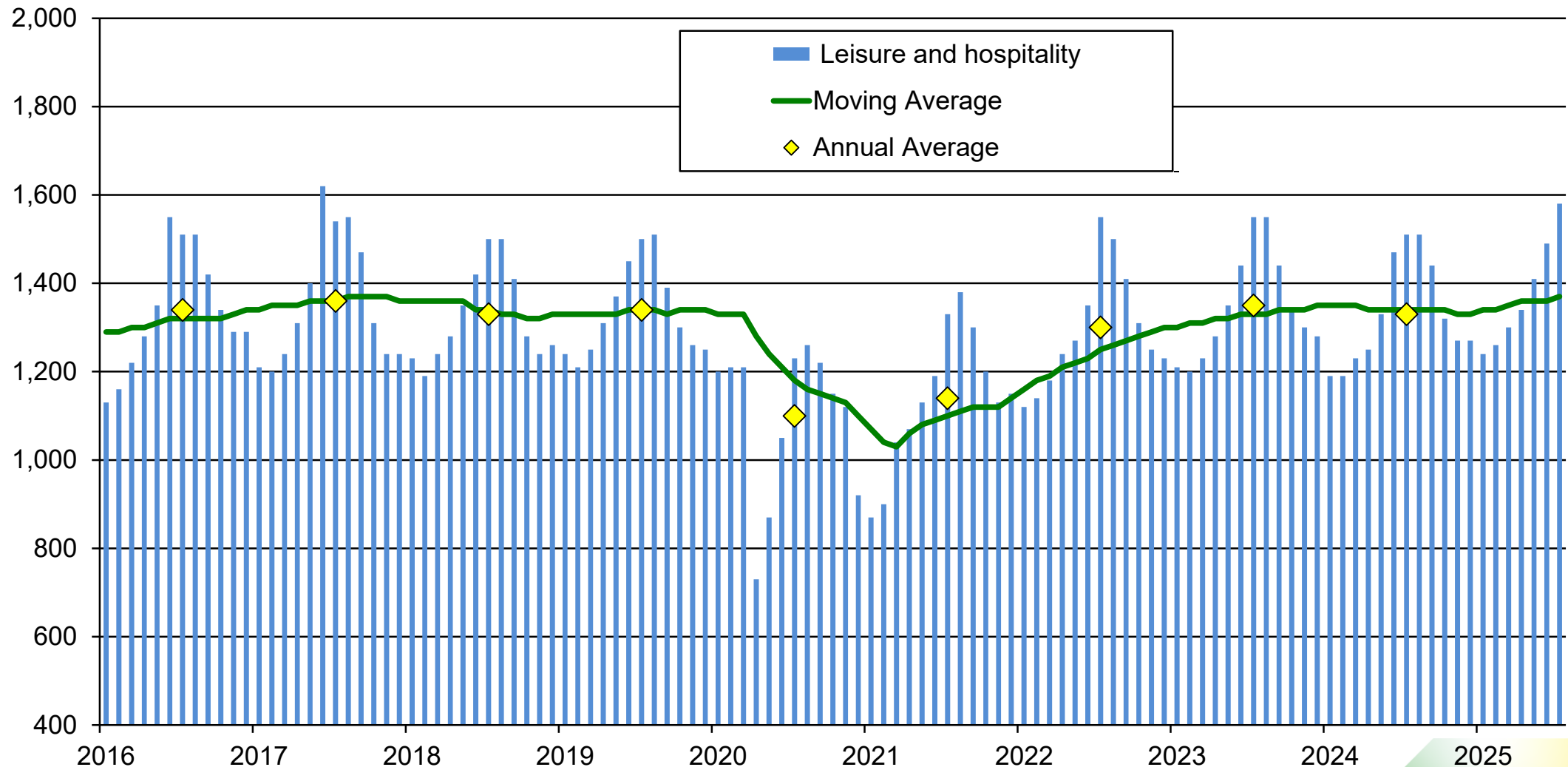
Wasco County Total Private Employment, 2016 - 2025



Source: Oregon Employment Department, Current Employment Estimates

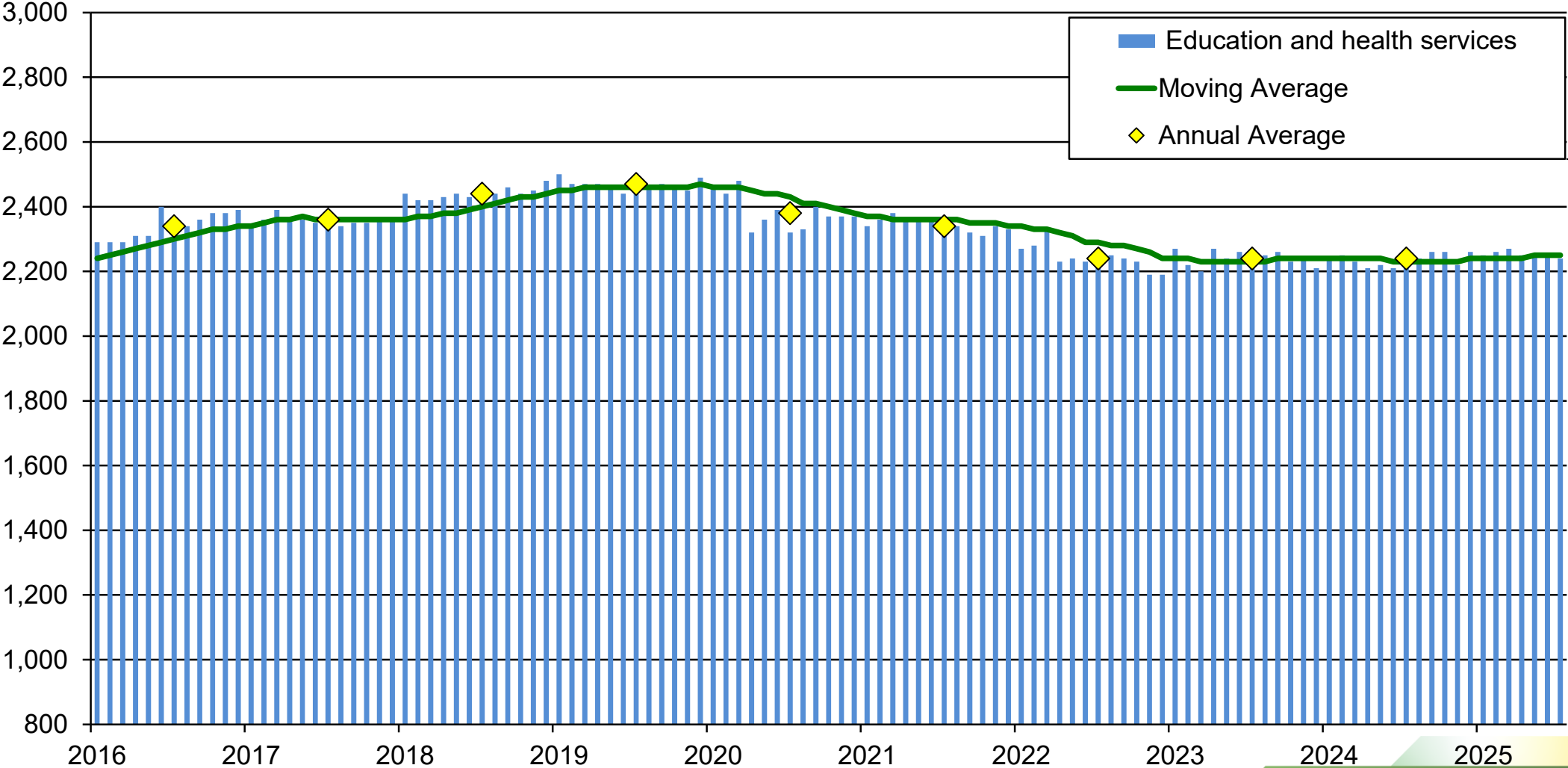
WASCO COUNTY: CURRENT OUTLOOK – LEISURE AND HOSPITALITY

Wasco County L&H Employment, 2016 - 2025



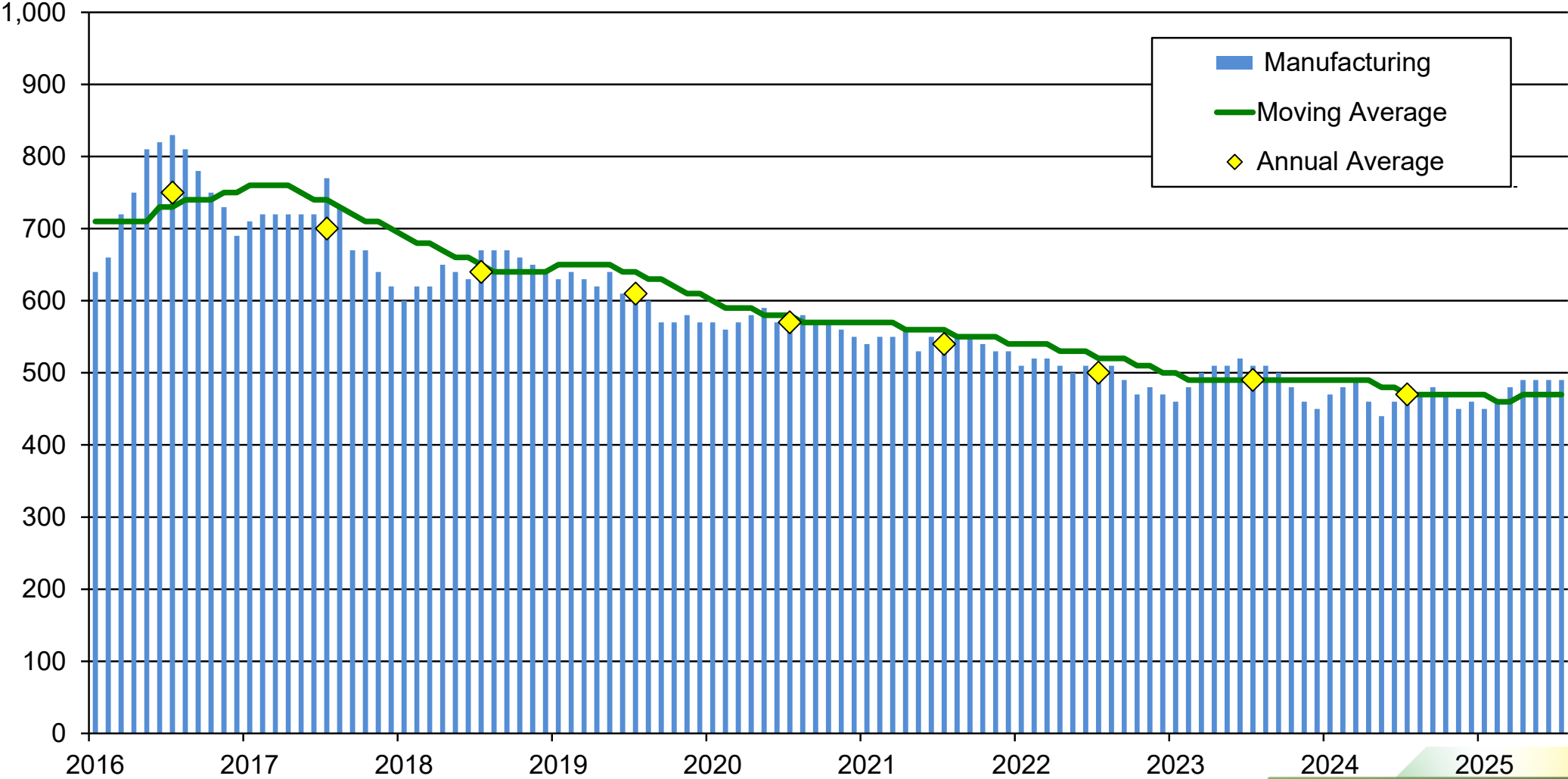
Source: Oregon Employment Department, Current Employment Estimates

Wasco County Education and Health Services Employment, 2016 - 2025



Source: Oregon Employment Department, Current Employment Estimates

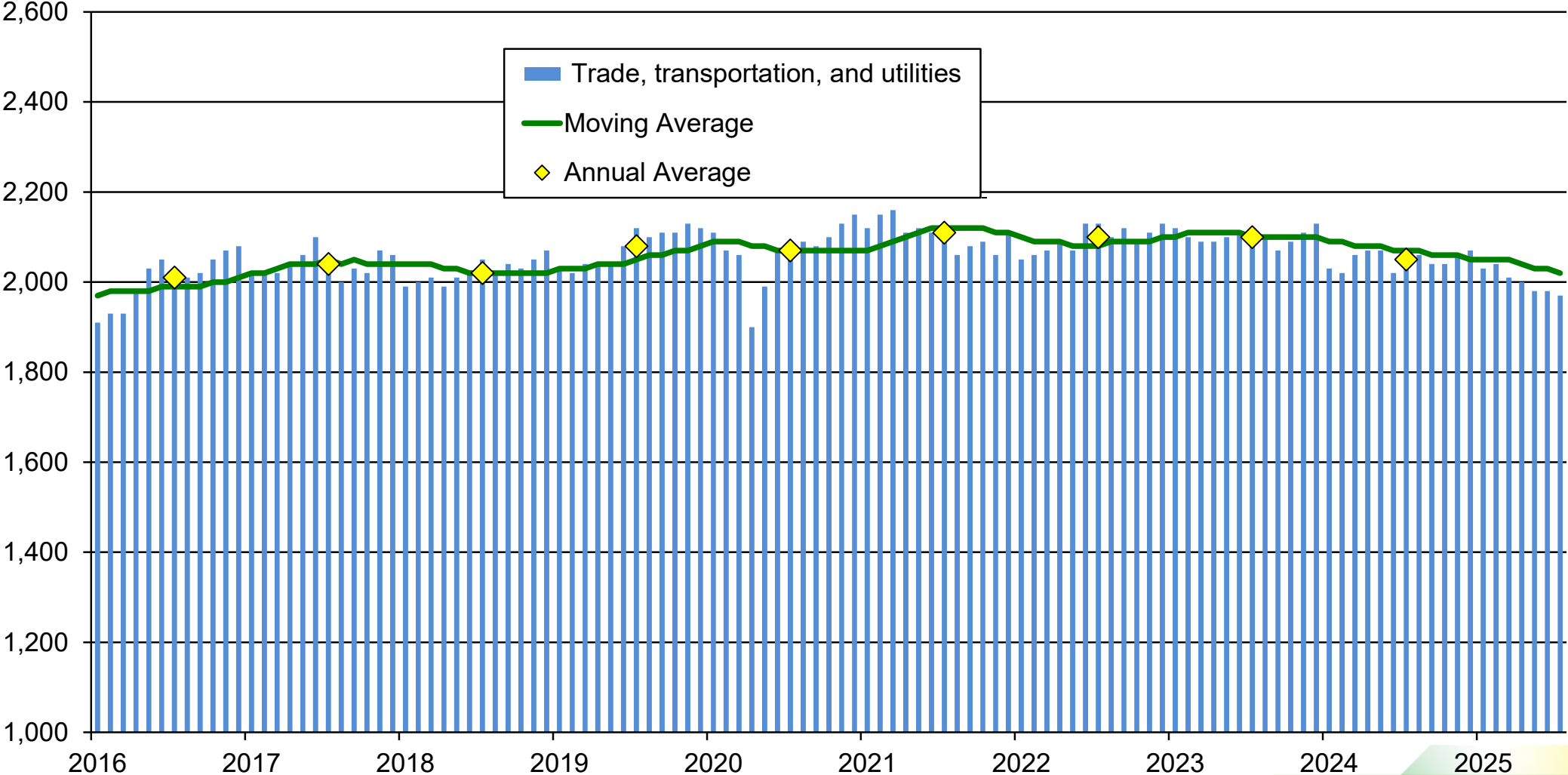
Wasco County Manufacturing Employment, 2016 - 2025



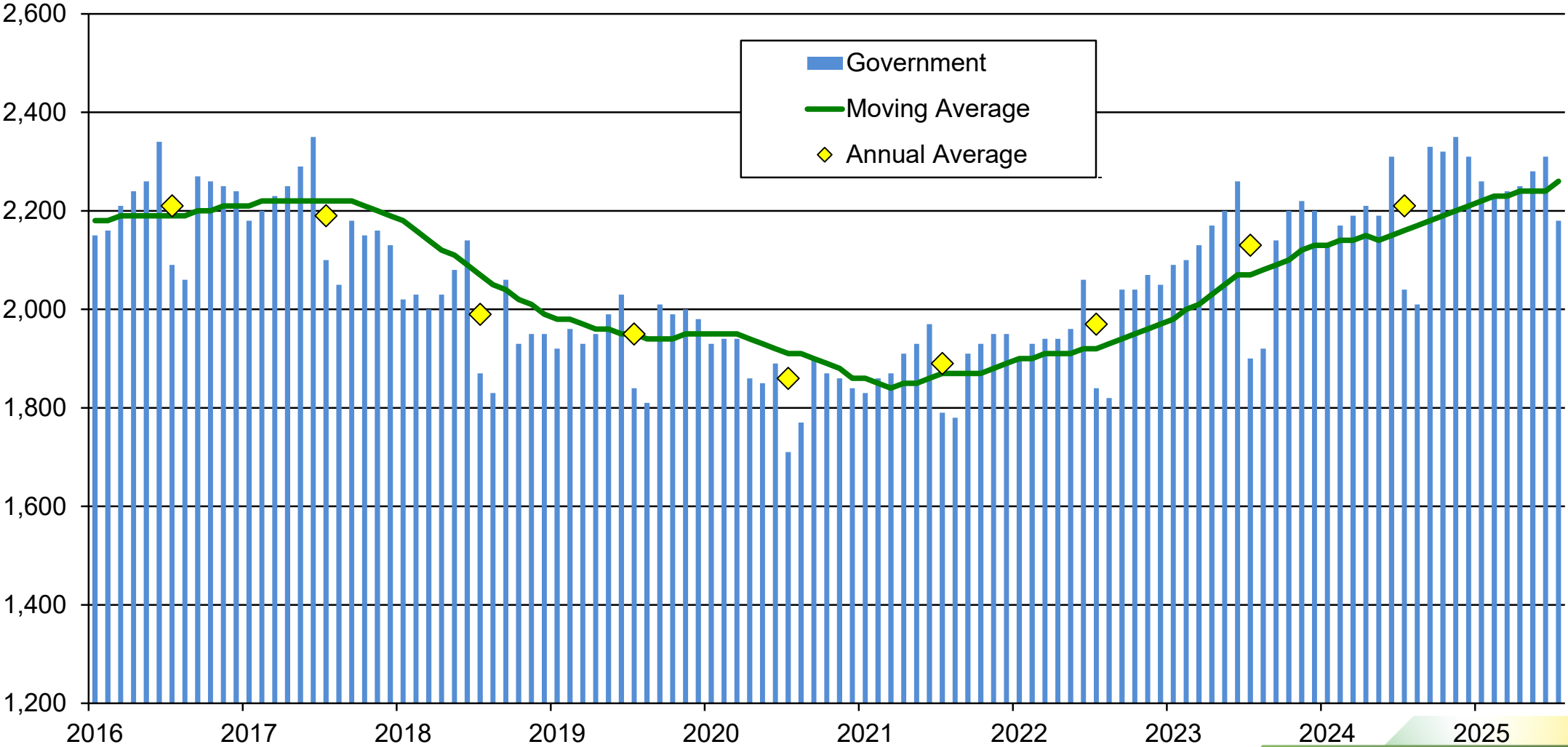
Source: Oregon Employment Department, Current Employment Estimates

WASCO COUNTY: CURRENT OUTLOOK – TRADE, TRANSPORTATION, AND UTILITIES

Wasco County TTU Employment, 2016 - 2025



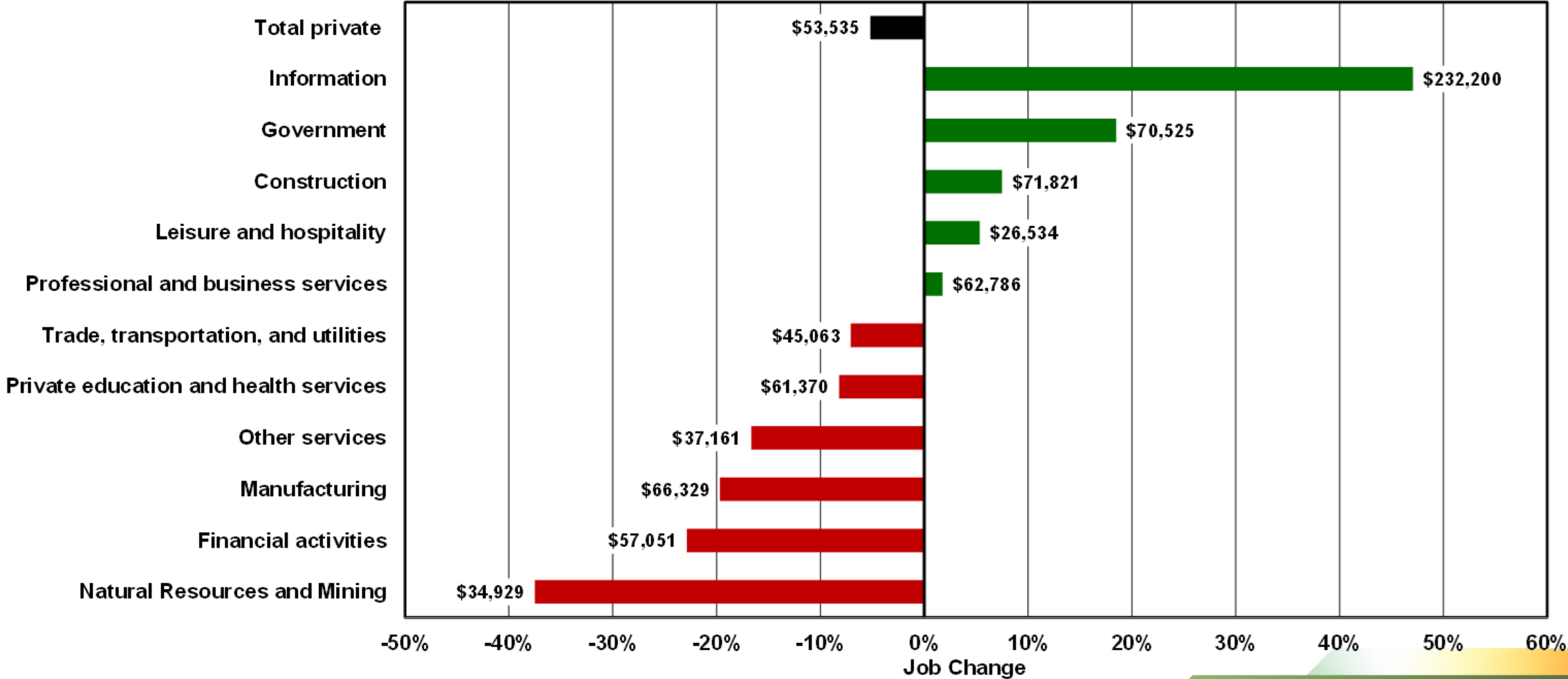
Wasco County Government Employment, 2016 - 2025



Source: Oregon Employment Department, Current Employment Estimates

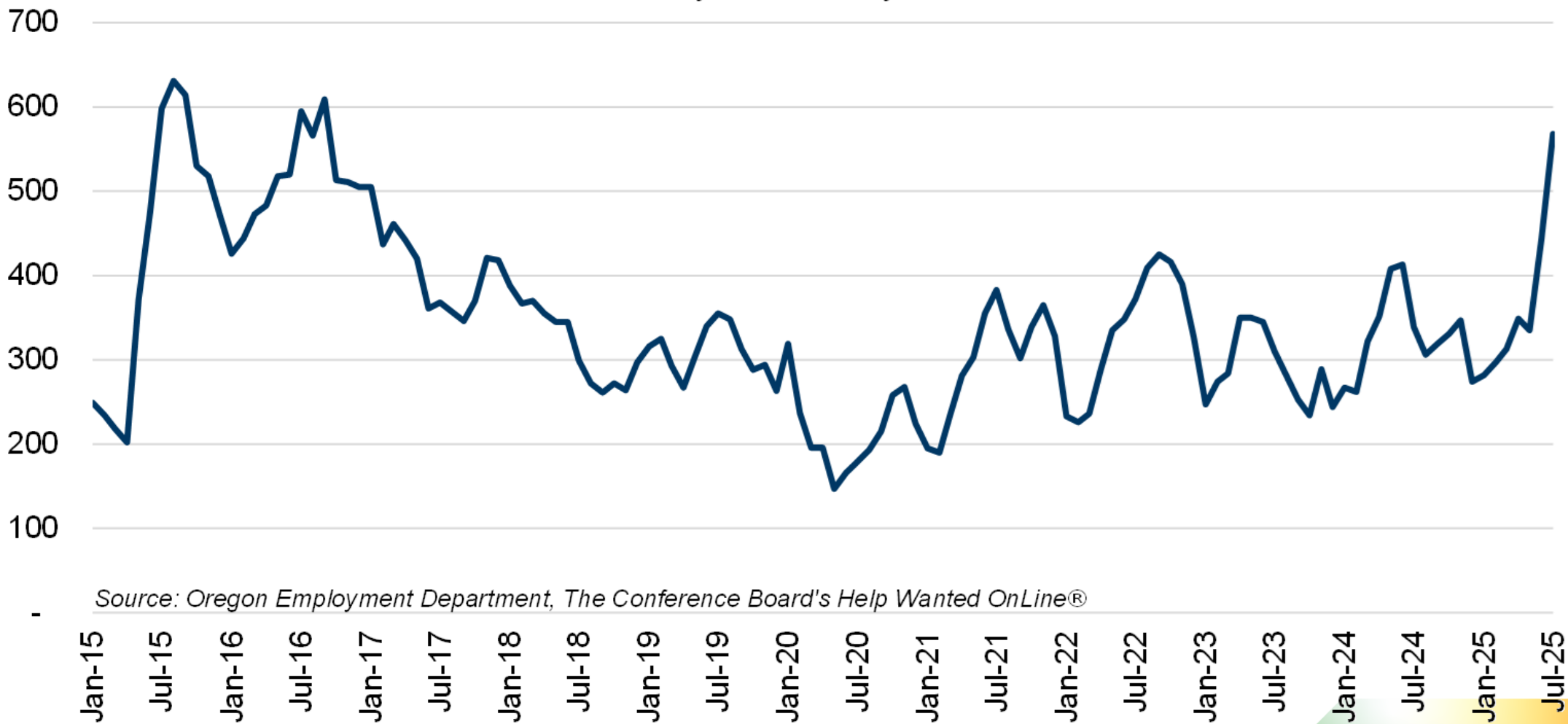
FIVE INDUSTRIES HAVE EMPLOYMENT ABOVE PRE-RECESSION LEVELS

Wasco County Job Change and Average Pay by Industry
July 2019 - July 2025 Job Change, 2024 Average Pay



WASCO JOB ADS ARE STILL HISTORICALLY HIGH , WHILE UNIQUE ADS REPRESENT ALMOST HALF

Active Job Postings in **Wasco County**,
January 2015 - July 2025



Source: Oregon Employment Department, The Conference Board's Help Wanted OnLine®

INTO THE FUTURE: COLUMBIA GORGE INDUSTRY PROJECTIONS

Industry Employment Projections, 2023-2033 Gilliam, Hood River, Sherman, Wasco, and Wheeler Counties

	2023	2033	Change	% Change
Total employment	30,830	32,630	1,800	6%
Total payroll employment	28,070	29,830	1,760	6%
Total private	23,910	25,620	1,710	7%
Mining and logging	80	80	0	0%
Construction	1,080	1,210	130	12%
Manufacturing	2,360	2,440	80	3%
Trade, transportation, and utilities	4,510	4,670	160	4%
Information	420	460	40	10%
Financial activities	710	720	10	1%
Professional and business services	1,860	2,080	220	12%
Private educational and health services	4,340	4,860	520	12%
Leisure and hospitality	4,070	4,500	430	11%
Other services	790	820	30	4%
Government	4,160	4,210	50	1%

HAVE YOU BEEN ASKED TO PARTICIPATE IN A BUREAU OF LABOR STATISTICS (BLS) SURVEY? *PLEASE DO!*

BLS survey information is gathered to create data for businesses, jobseekers, workers and policy-makers about the economy including:

Employment*	Unemployment*	Occupational Wages*
Job vacancies*	Productivity	Occupational Employment*
Consumer spending patterns	Workplace injuries	Compensation
Long-term employment projections*	Employer-provided benefits	Price movements

** Collected and produced by Oregon Employment Department*

Your response is vital to ensuring accurate, complete, and unbiased data that is representative of the people and businesses in Oregon and the United States.

Your confidential responses are protected by federal and state law and strict security policies that prohibit us from releasing any information that could reveal the identity of you or your business without your consent.

Thank you for helping us track the Oregon economy!

Thank You!

Please scan the QR code for a short survey.



SHARE YOUR FEEDBACK!

NICOLE S. RAMOS, REGIONAL ECONOMIST
nicole.s.ramos@employ.oregon.gov

SIGN UP FOR THE LATEST WORKFORCE AND ECONOMIC RESEARCH:
www.qualityinfo.org/subscribe

FOLLOW US ON X @OED_RESEARCH AND BLUESKY @OED-RESEARCH